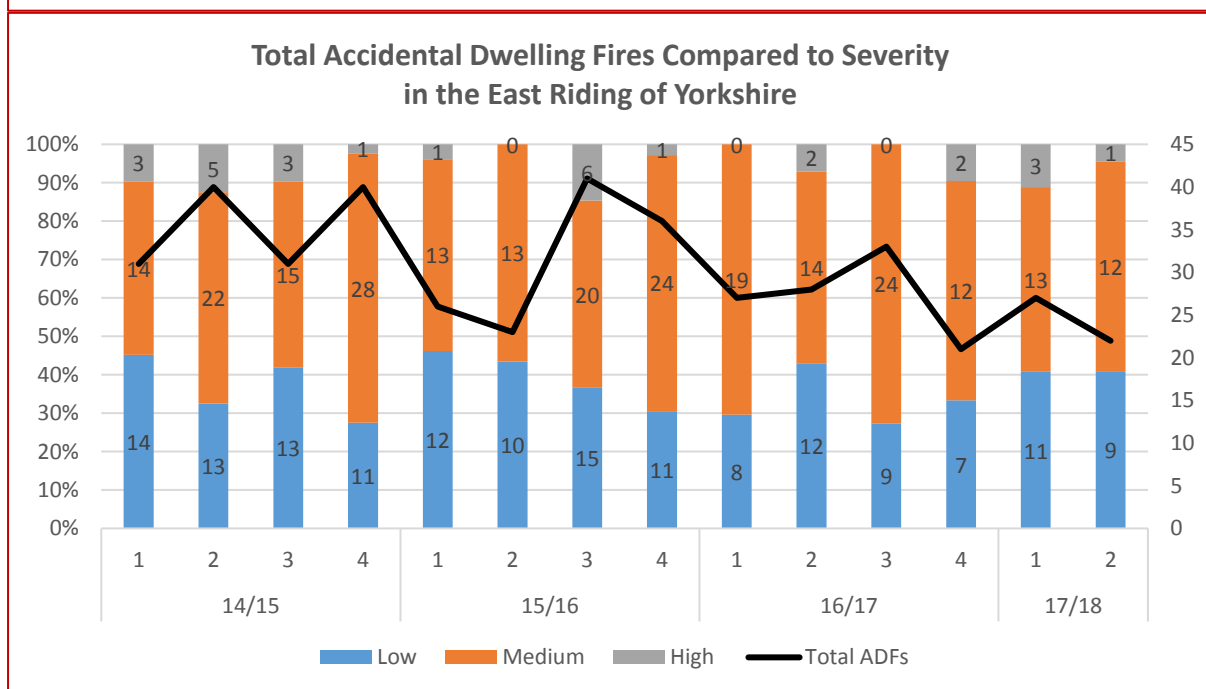
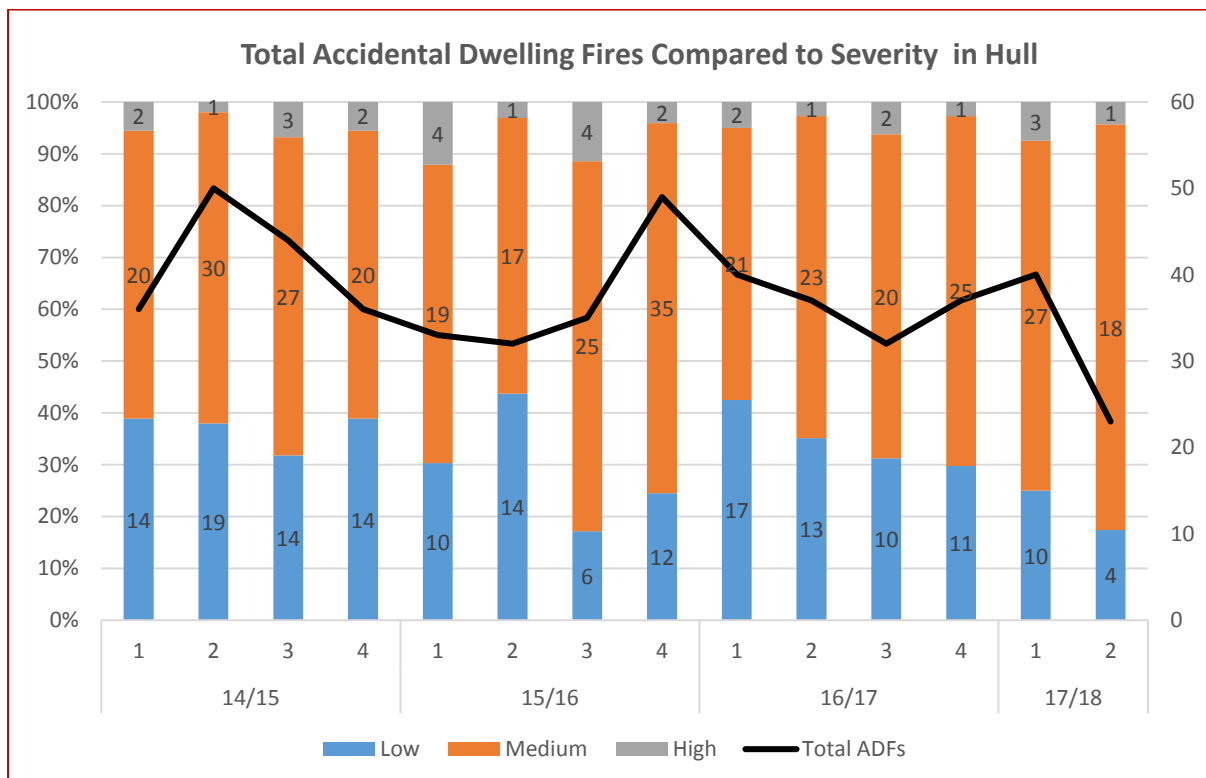


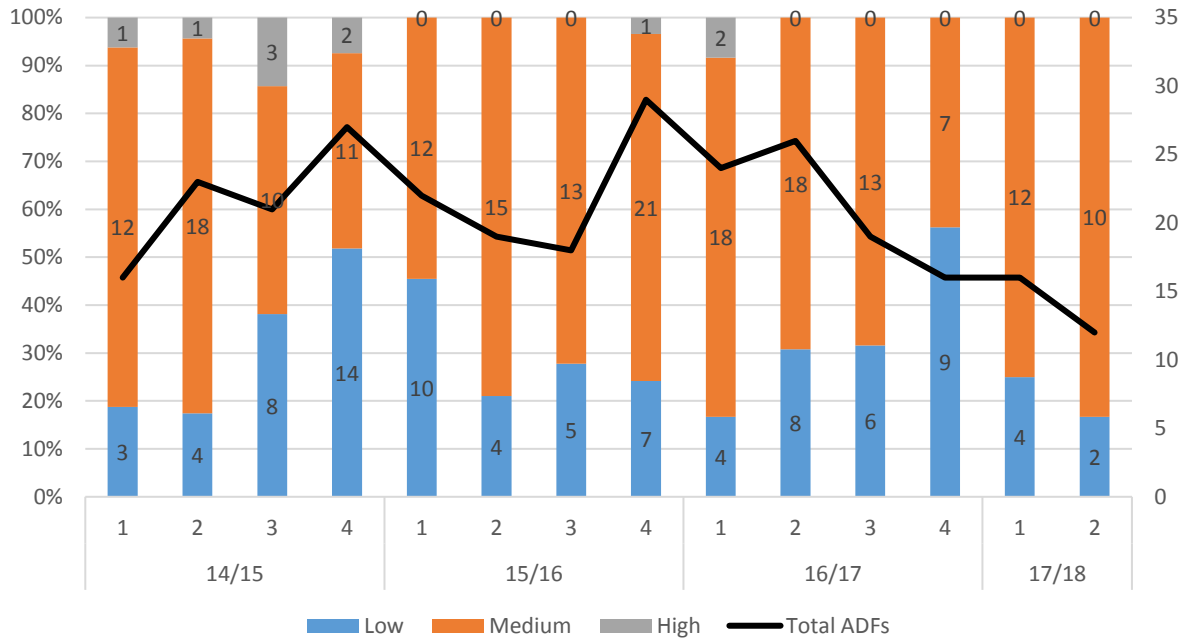
Accidental Dwelling Fires

The charts below show the severity of the accidental dwelling fires to the end of Quarter 2. The number of incidents that were rated as high severity was very low. These charts also show the pleasing downward trend in the number of accidental dwelling fires.

Note: The charts show the number of accidental dwelling fires within each severity category for each quarter of 2014/15, 2015/16, 2016/17 and 2017/18 to Quarter 2.



Total Accidental Dwelling Fires Compared to Severity in North East Lincolnshire



Total Accidental Dwelling Fires Compared to Severity in North Lincolnshire

